

Winter forage crop grazing in the Gore-Mataura area of Southland: using time-series mapping to estimate location and frequency of cropping

John J. DREWRY, Heather NORTH, Stella E. BELLISS, Alexander AMIES

Additional File

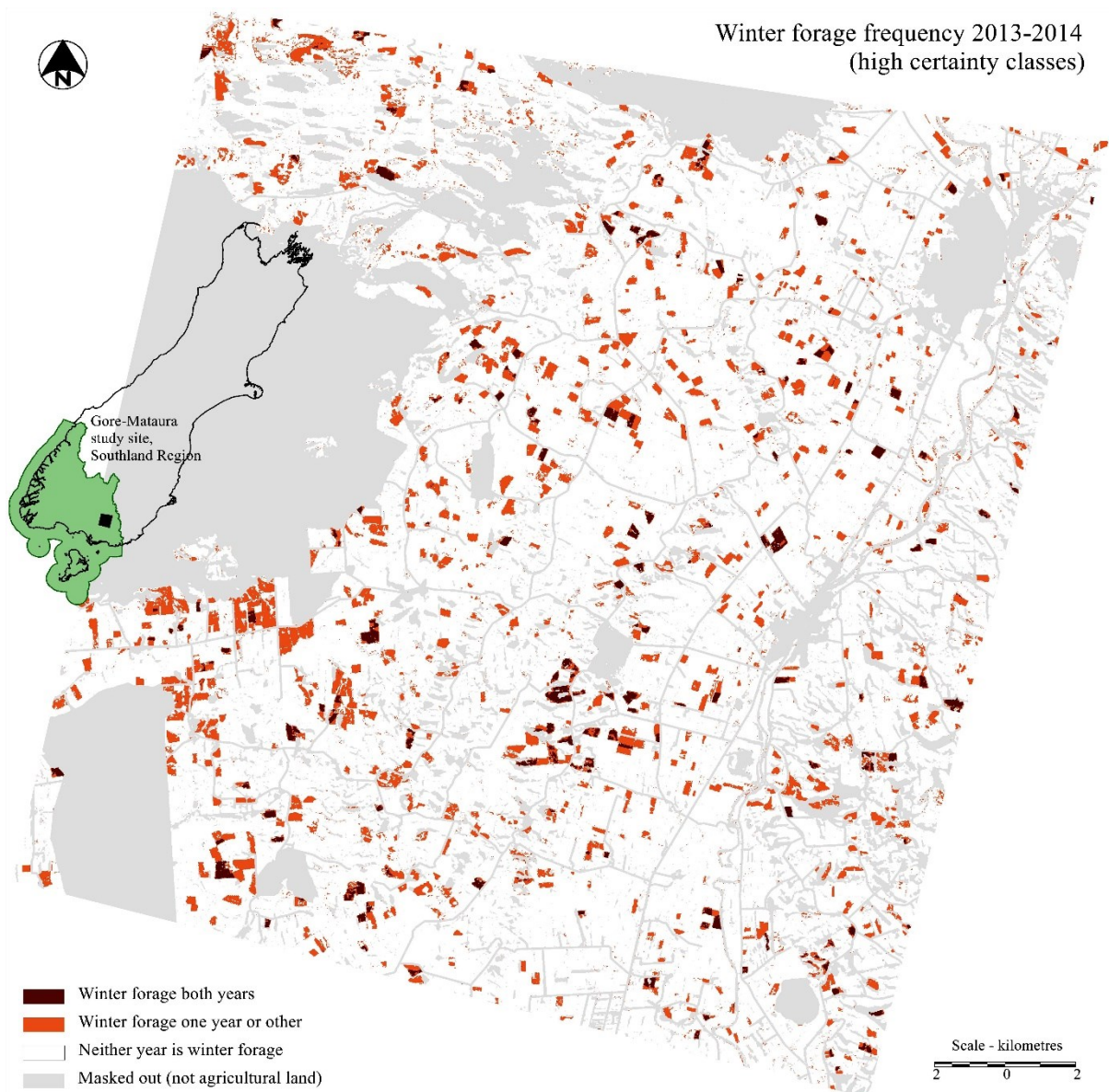


Figure A1 Winter-forage frequency for high-certainty classes in 2013 and 2014, in the Gore-Mataura area, Southland.

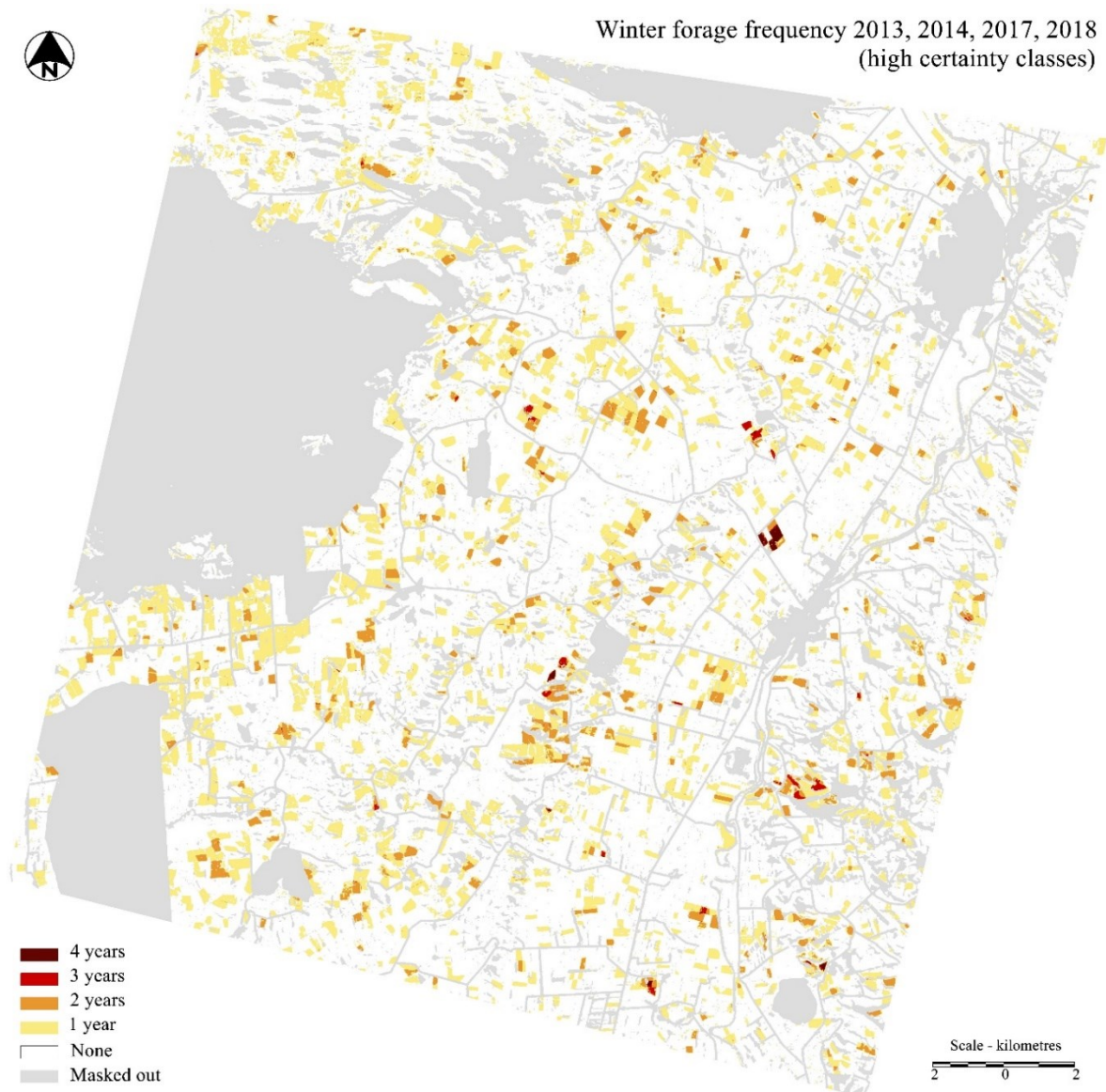


Figure A2 Winter-forage frequency for high-certainty classes in 2013, 2014, 2017 and 2018, in the Gore-Mataura area, Southland (Note: as far as we are aware there are no existing winter forage maps of Southland for the years 2015 or 2016 so paddocks were analysed in only four years out of the full six-year period 2013–2018 inclusive).

Data layer

The following is the link to the data layer, for data from the report below:

<https://data.mfe.govt.nz/layer/103810-nz-hill-country-winter-forage-2018/>

Belliss SE, Pairman D, Dymond J, Amies A, Zoerner J, Shepherd J, North H, Drewry J. 2019. *Identification of high-risk agricultural activities: national mapping of the location, scale and extent of winter forage cropping and intensive grazing on hill country land*. Prepared for Ministry for the Environment. [Manaaki Whenua – Landcare Research contract report number: LC3469]. Lincoln: Manaaki Whenua - Landcare Research, 51 p.

<https://www.mfe.govt.nz/sites/default/files/media/Fresh%20water/identification-of-high-risk-agricultural-activities-on-hill-country-land.pdf>